



HIGH SCHOOL BOUNDARY ADJUSTMENT

April 4, 2018
Board Workshop



BOUNDARY ADJUSTMENT INFO

- **OPTIONS**

- Number of students by neighborhood moving between high schools
- Middle School Boundary Overlay
- Projected Transportation Impact - Projected Number of Routes

- **TRANSPORTATION RIDE TIMES**

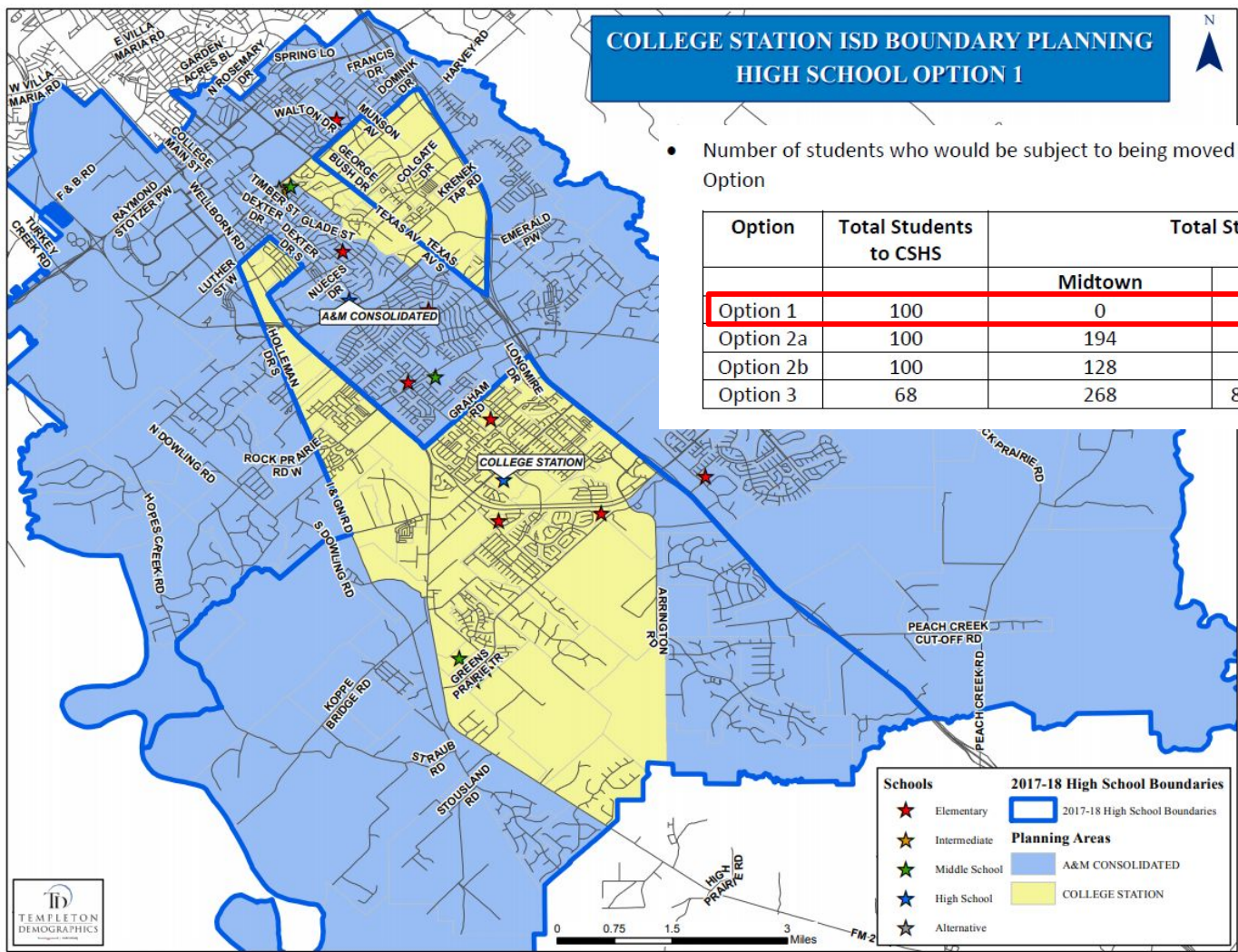
- **MAP** of geographic areas that changed with new high school boundaries with 2017 implementation
- **NUMBER** of students projected for Margraves Ranch AND other CONSOL growth areas
- **STUDENT TRANSFERS** between High Schools

OPTION 1

COLLEGE STATION ISD BOUNDARY PLANNING HIGH SCHOOL OPTION 1

- Number of students who would be subject to being moved in 2019 upon implementation by Option

Option	Total Students to CSHS	Total Students to Consol		
		Midtown	Nan-IL	West Side
Option 1	100	0	136	195
Option 2a	100	194	136	0
Option 2b	100	128	0	191
Option 3	68	268	8 (Mrg, SO, WC)	28



Schools

- ★ Elementary
- ★ Intermediate
- ★ Middle School
- ★ High School
- ★ Alternative

2017-18 High School Boundaries

- 2017-18 High School Boundaries

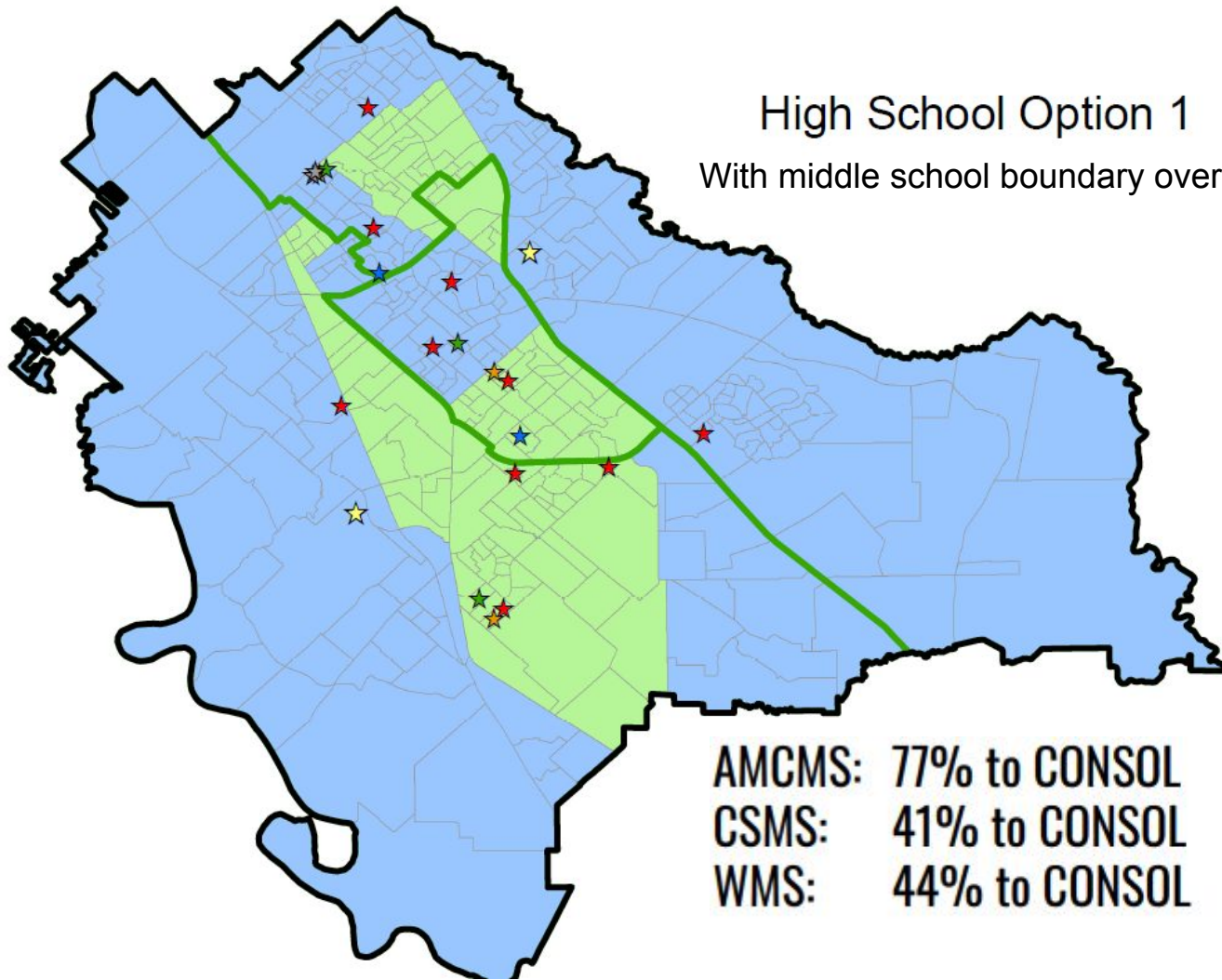
Planning Areas

- A&M CONSOLIDATED
- COLLEGE STATION



***O
P
T
I
O
N

1***



AMCMS:	77% to CONSOL	23% to CSHS
CSMS:	41% to CONSOL	59% to CSHS
WMS:	44% to CONSOL	56% to CSHS

PROJECTED TRANSPORTATION IMPACT - OPTION 1

AREA	CURRENT HS ROUTES	ADDED ROUTES w THIS OPTION	ADDED ROUTES 2019 GROWTH*	NET ADDS	TOTAL COSTS (@\$20 K/ ROUTE)
ANDERSON ST	0	2 HS ONLY	0	2	\$40 K
INDIAN LAKES AREA	2 IS/MS/HS	1 HS ONLY	0	1	\$20 K
WEST SIDE	3 IS/MS/HS	3 HS ONLY	1	2	\$40 K

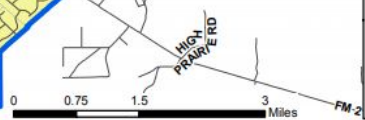
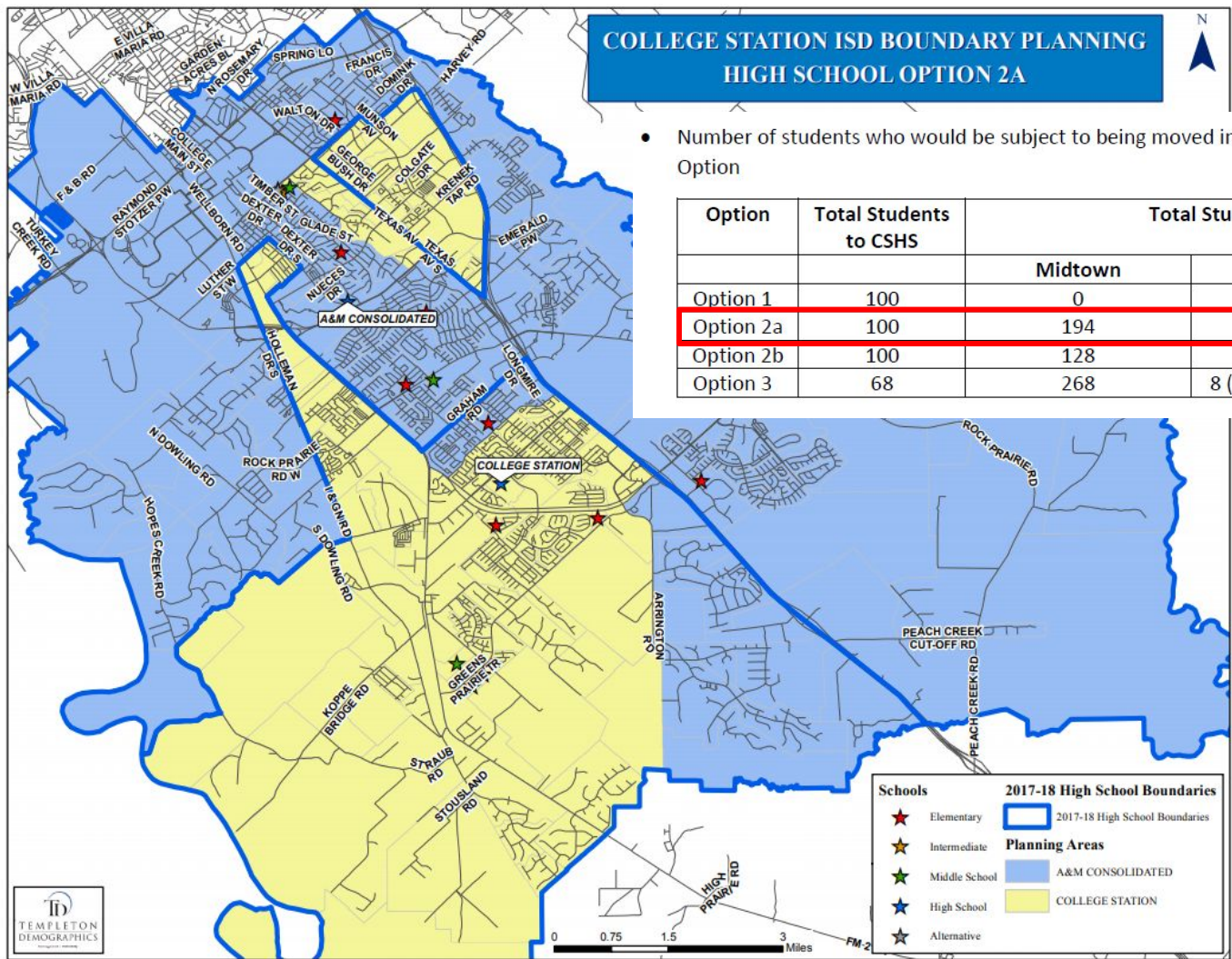
**Independent of zone changes*

OPTION 2a

COLLEGE STATION ISD BOUNDARY PLANNING HIGH SCHOOL OPTION 2A

- Number of students who would be subject to being moved in 2019 upon implementation by Option

Option	Total Students to CSHS	Total Students to Consol		
		Midtown	Nan-IL	West Side
Option 1	100	0	136	195
Option 2a	100	194	136	0
Option 2b	100	128	0	191
Option 3	68	268	8 (Mrg, SO, WC)	28



Schools

- ★ Elementary
- ★ Intermediate
- ★ Middle School
- ★ High School
- ★ Alternative

2017-18 High School Boundaries

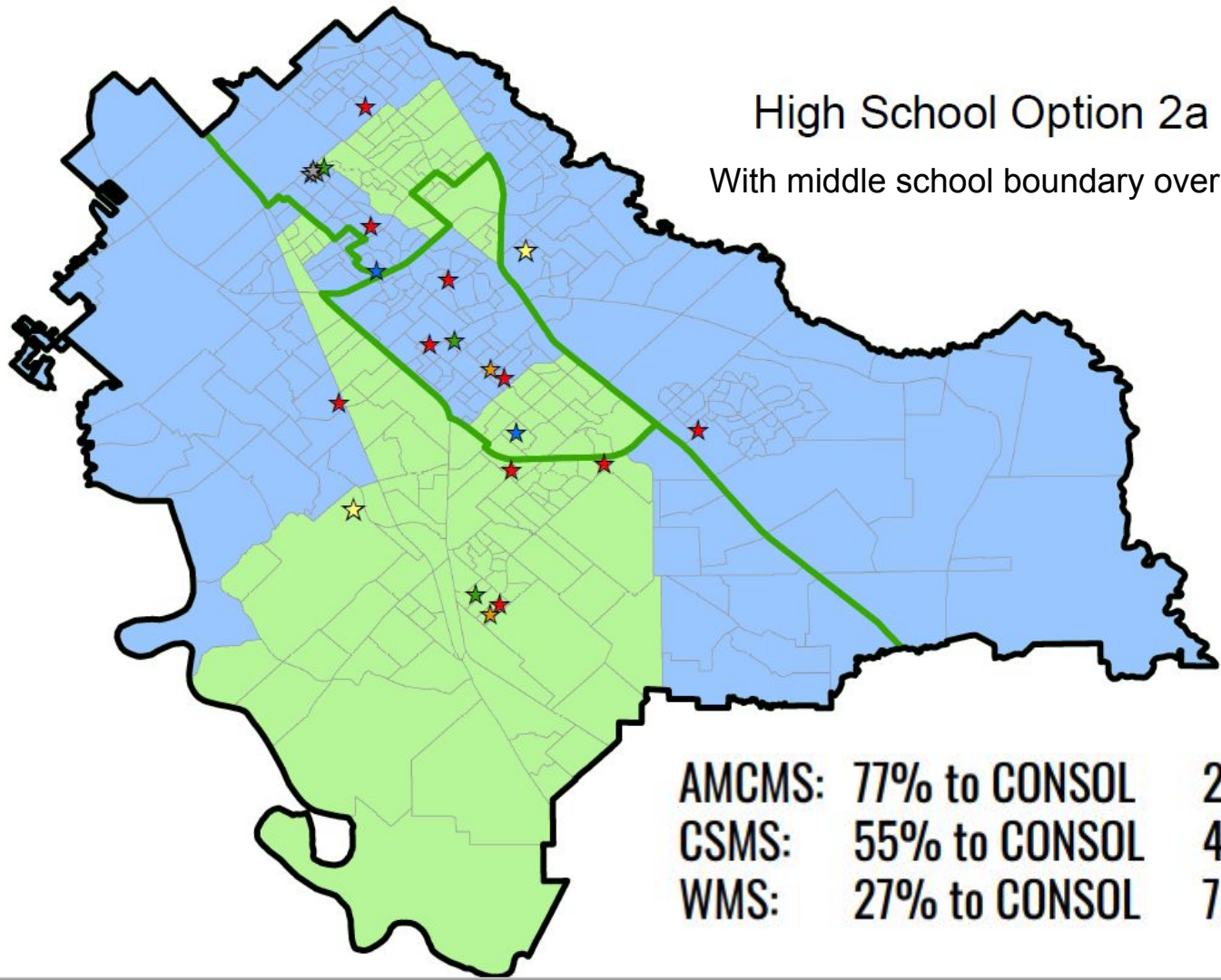
- 2017-18 High School Boundaries

Planning Areas

- A&M CONSOLIDATED
- COLLEGE STATION

***O
P
T
I
O
N

2a***



High School Option 2a
With middle school boundary overlay

AMCMS:	77% to CONSOL	23% to CSHS
CSMS:	55% to CONSOL	45% to CSHS
WMS:	27% to CONSOL	73% to CSHS

PROJECTED TRANSPORTATION IMPACT - OPTION 2a

AREA	CURRENT ROUTES	ADDED ROUTES w THIS OPTION	ADDED ROUTES 2019 GROWTH*	NET ADDS	TOTAL COSTS (@\$20 K/ ROUTE)
ANDERSON ST	0	2 HS ONLY	0	2	\$40 K
INDIAN LAKES AREA	2 IS/MS/HS	1 HS ONLY	0	1	\$20 K
MID TOWN	0	1 HS ONLY	0	1	\$20 K

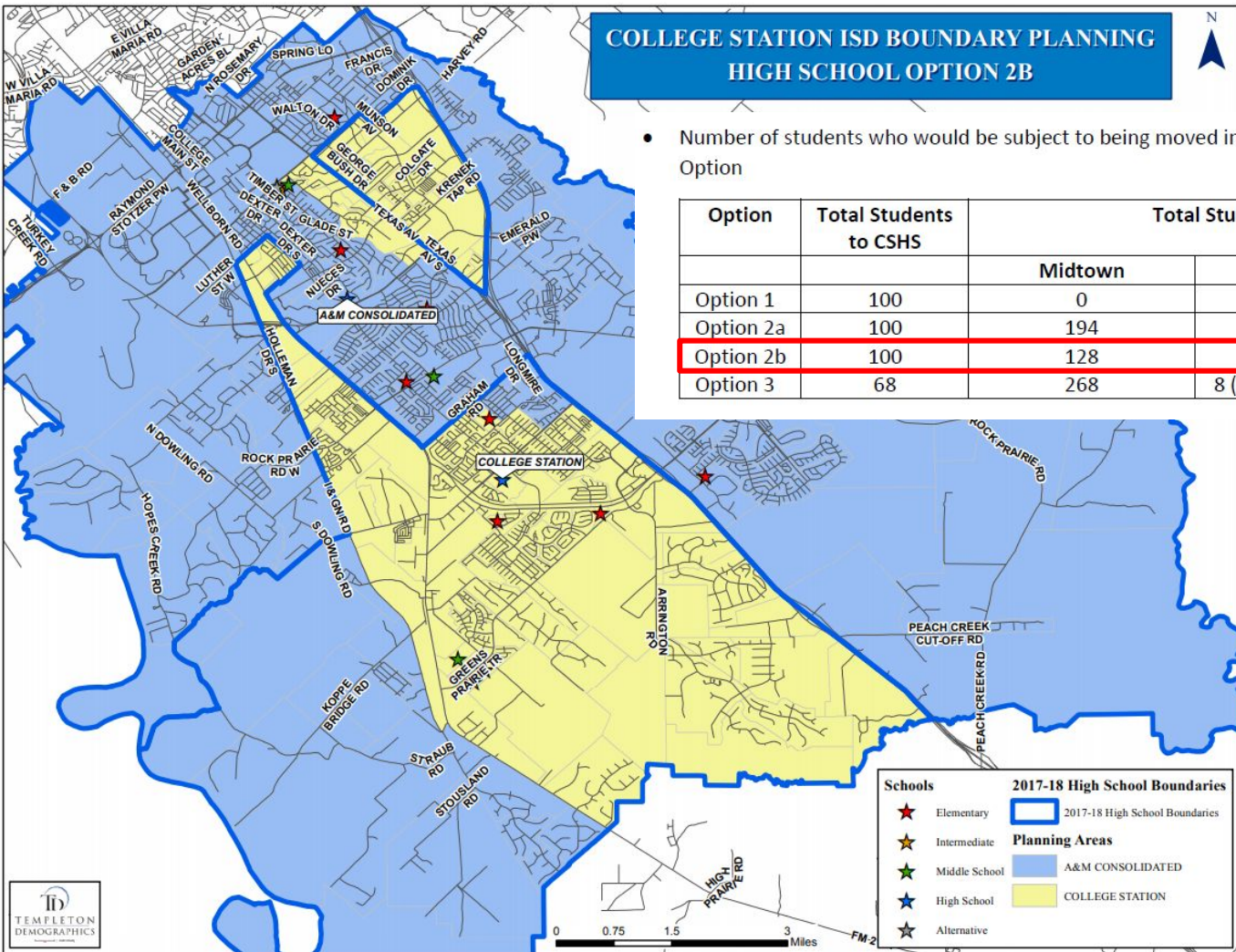
**Independent of zone changes*

OPTION 2b

COLLEGE STATION ISD BOUNDARY PLANNING HIGH SCHOOL OPTION 2B

- Number of students who would be subject to being moved in 2019 upon implementation by Option

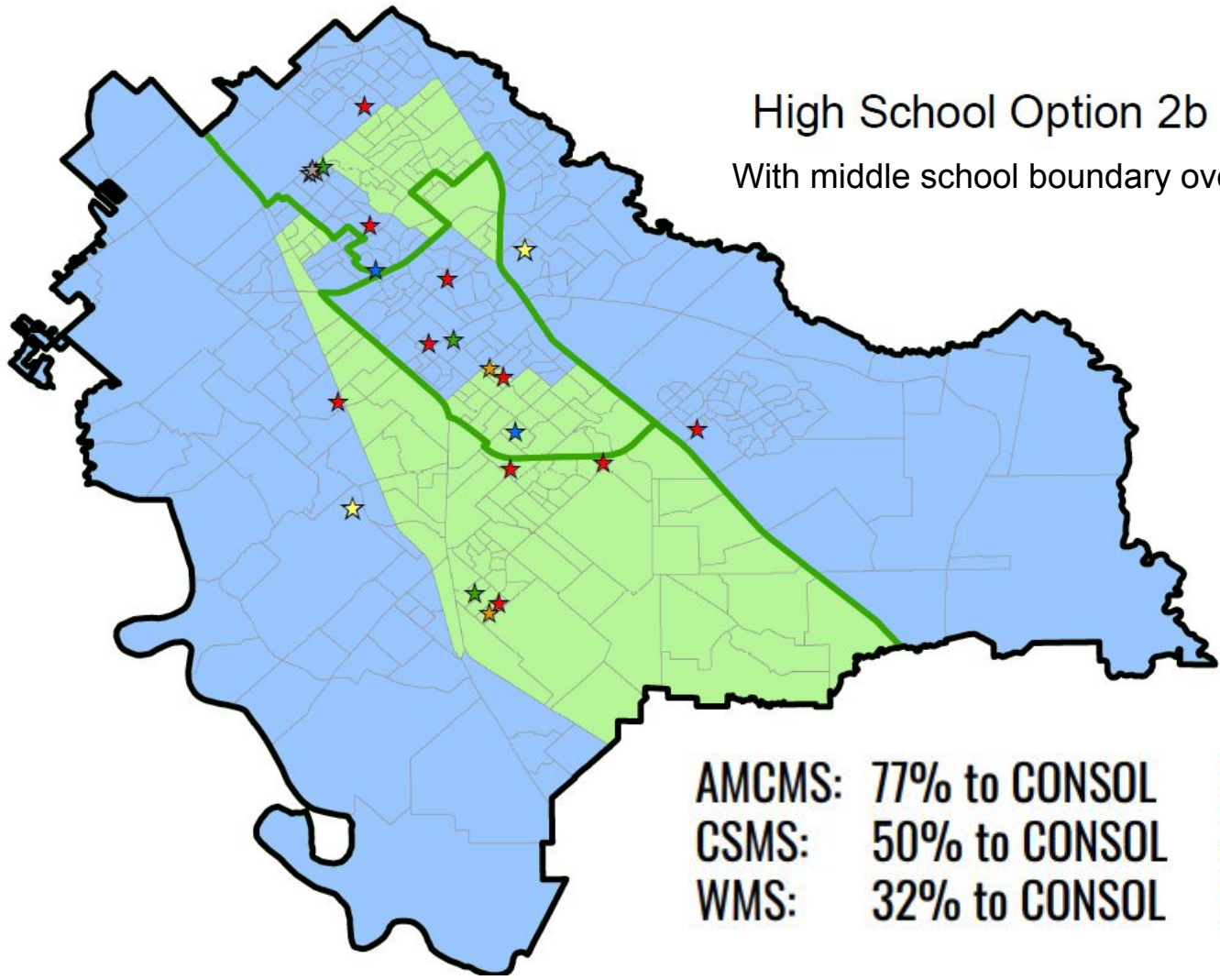
Option	Total Students to CSHS	Total Students to Consol		
		Midtown	Nan-IL	West Side
Option 1	100	0	136	195
Option 2a	100	194	136	0
Option 2b	100	128	0	191
Option 3	68	268	8 (Mrg, SO, WC)	28



0 0.75 1.5 3 Miles FM 2

***O
P
T
I
O
N

2b***



High School Option 2b
With middle school boundary overlay

AMCMS:	77% to CONSOL	23% to CSHS
CSMS:	50% to CONSOL	50% to CSHS
WMS:	32% to CONSOL	68% to CSHS

PROJECTED TRANSPORTATION IMPACT - OPTION 2b

AREA	CURRENT ROUTES	ADDED ROUTES w THIS OPTION	ADDED ROUTES 2019 GROWTH*	NET ADDS	TOTAL COSTS (@\$20 K/ ROUTE)
ANDERSON ST	0	2 HS ONLY	0	2	\$40 K
MID TOWN	0	1 HS ONLY	0	1	\$20 K
WEST SIDE	3 IS/MS/HS	3 HS ONLY	1	2	\$40 K

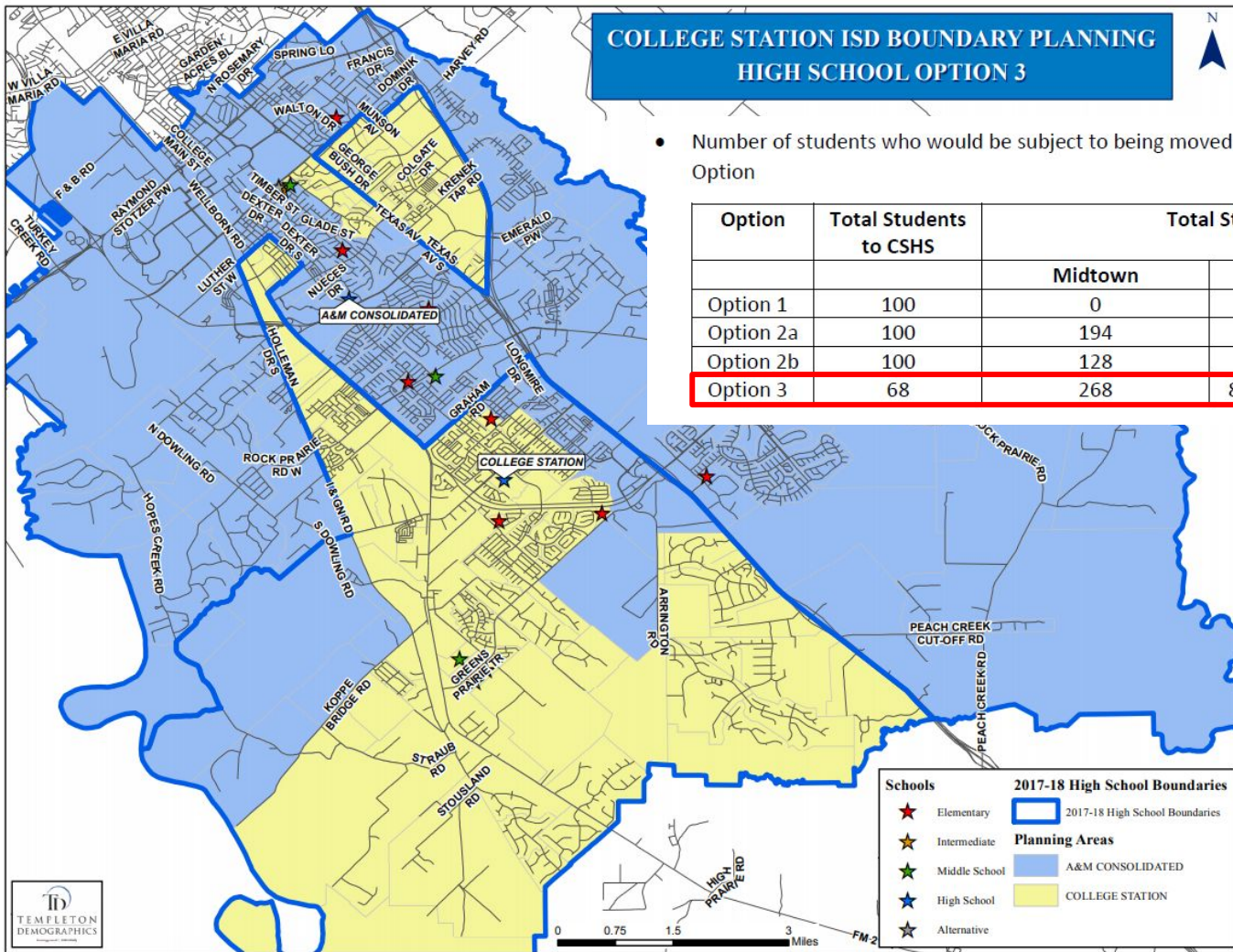
**Independent of zone changes*

OPTION 3

COLLEGE STATION ISD BOUNDARY PLANNING HIGH SCHOOL OPTION 3

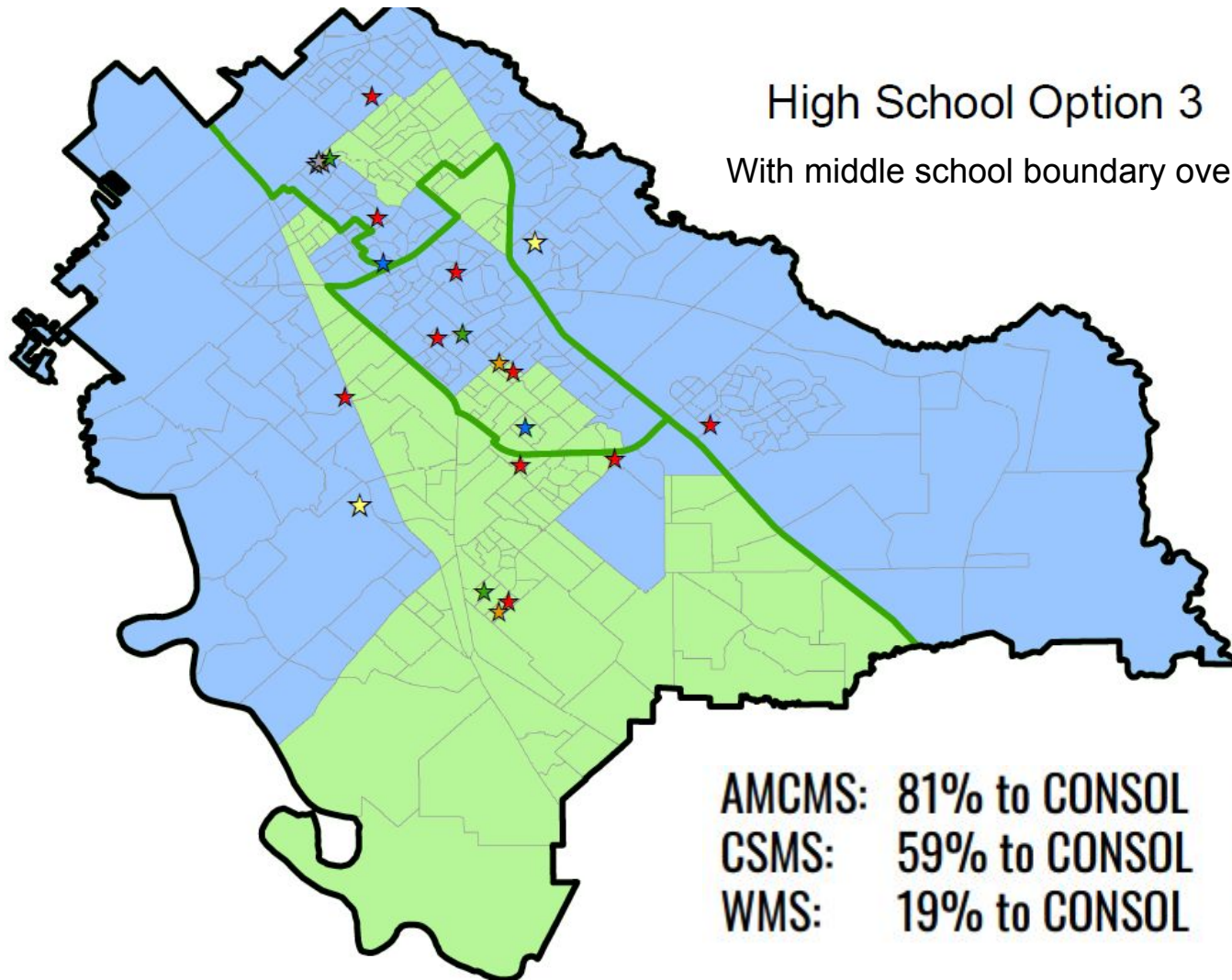
- Number of students who would be subject to being moved in 2019 upon implementation by Option

Option	Total Students to CSHS	Total Students to Consol		
		Midtown	Nan-IL	West Side
Option 1	100	0	136	195
Option 2a	100	194	136	0
Option 2b	100	128	0	191
Option 3	68	268	8 (Mrg, SO, WC)	28



***O
P
T
I
O
N***

3



High School Option 3

With middle school boundary overlay

AMCMS:	81% to CONSOL	19% to CSHS
CSMS:	59% to CONSOL	41% to CSHS
WMS:	19% to CONSOL	81% to CSHS

PROJECTED TRANSPORTATION IMPACT - OPTION 3

AREA	CURRENT ROUTES	ADDED ROUTES w THIS OPTION	ADDED ROUTES 2019 GROWTH*	NET ADDS	TOTAL COSTS (@\$20 K/ ROUTE)
ANDERSON ST	0	1	0	1	\$20 K
MID TOWN	0 IS/MS/HS	2 HS	0	2	\$40 K
WEST SIDE	1 IS/MS/HS	1 HS	0	1	\$20 K

**Independent of zone changes*



TRANSPORTATION RIDE TIMES

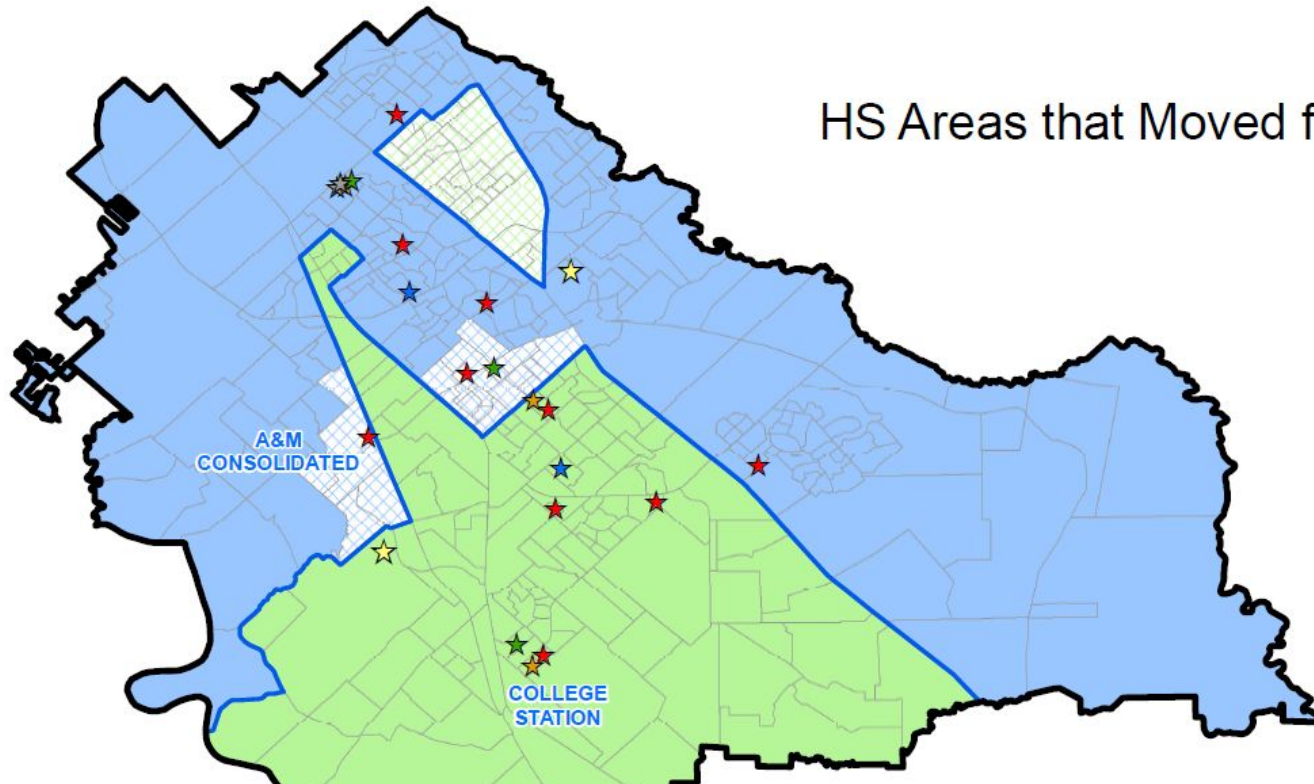
- Morning ride time for the CSISD transportation department is quantified by the first student picked up to the last school drop-off.
- Afternoon ride time for CSISD transportation department is quantified by the first school pick-up location to the last student dropped off.
- Ride time is NOT from the time a student is picked up in the morning to when school starts.
- Ride time is NOT from the time school ends to when the student gets home.
- Bus routes are designed to limit student ride time to no more than one hour, one way, for the farthest away student, if at all possible.



HOW WILL REZONING AFFECT RIDE TIMES

- **Routes that service Pecan Trail and Wellborn Middle School would no longer be able to also service high school students for the rezoned areas in the southern part of town.**
- **The transportation department will add high school student ONLY routes to the rezoned areas.**
- **The addition of these routes - and WMS being in much closer proximity to Pecan Trail than CSMS - are projected to lower ride times for all grade 5-12 students in the rezoned areas.**

HS Areas that Moved for 2017



- Map of geographic areas that changed with new High School boundaries when implemented in 2017
 - No high school areas that moved prior to Fall 2017 are involved in any of the initial options for consideration



Margraves Ranch Property

- Number of High School students projected for the Margraves Ranch property

School Year	Students
2019-20	0
2020-21	4
2021-22	15
2022-23	32
2023-24	53
2024-25	76
2025-26	97
2026-27	108
2027-28	109



Other Consol Growth Areas

- Number of High School students projected for the Other Growing areas in Consol Zone

School Year	Southern Pointe	Lakeway Reserve	Mission Ranch	Crossing of Lick Creek	Williams Creek	Pebble Creek Ph. 10	Bird Pond Est. Ph. 2
2019-20	4	1	33	9	20	10	5
2020-21	19	1	33	13	22	14	6
2021-22	34	1	47	18	24	19	9
2022-23	50	1	60	21	25	23	11
2023-24	76	4	73	22	26	27	13
2024-25	101	11	87	23	26	30	15
2025-26	124	28	95	24	25	34	14
2026-27	147	34	95	25	25	36	14
2027-28	169	50	93	26	25	39	14



High School Transfers

Non-employee transfers between CONSOL and CSHS:

- The reason for the transfers run the gamut and include special education programming, transportation issues, grandparent rule, CATE programming offered only at one of the schools, medical reasons, bullying and several other one-off issues. We address these transfer requests on an individual basis.
- This school year we have granted 45 non-employee transfers from CONSOL to CSHS and 59 from CSHS to CONSOL.



High School Transfers

Employee Transfers between CONSOL and CSHS:

- There are two categories listed below. Those employees who live within the district and have requested to transfer from one high school to the other, and those who live out of the district boundaries and request their student(s) attend a CSISD school.
- Out-of district transfers: This school year we have 38 students of employees who live out of the district who attend CONSOL and 30 who attend CSHS.
- In-district transfers: This school year we have 22 students of employees who live in CSISD who were transferred to CONSOL and 29 students of employees who live in CSISD who were transferred to CSHS.

So, overall, transfers to CONSOL total 119, while transfers to CSHS total 104.



REMAINING SCHEDULE as of 4.4.18

BOUNDARY ADJUSTMENT WORKSHOP

- Wednesday, April 4 - 3:00 p.m.
- CSISD Boardroom

BOUNDARY ADJUSTMENT WORKSHOP

- Monday, April 9 - 5:00 p.m.
- CSISD Boardroom

**FEEDBACK CAN BE SENT BY
EMAIL TO:**

feedback@csisd.org



QUESTIONS / COMMENTS